

# DEFINING LUXURY

Featuring the new Diamond Collection for Multi-Chef™

You have never met a chafing system like this in your life! Get ready to shine with the new Diamond Collection for Multi-Chef. Clean lines and modern form come together to create luxurious pieces that will instantly give your buffet an elite feel.

Designed to fit every accessory available in the Rosseto Multi-Chef line, the Diamond Collection is a sleek and elegant alternative to the traditional chafing dish. Build the ultimate buffet system with options for warming, cooling and everything in between. Also, works with the Rosseto Chafing Pod with Soft Closing Lid and Induction sets.

## Diamond Multi-Chef™ Kit Features:

- US stainless steel
- Includes stainless track grill kit
- Includes burner and fuel cell holder
- Sleek and modern
- Fits all standard size food pans/hotel pans
- Black matte and stainless steel options available
- Available in both 7" and 10" sizes
- Fits all Multi-Chef accessories (induction, carving boards, etc)



## Track Grill Features:

- Use for serving large pots and food pans
- Adjust the heat with 1, 2, or 3 burners
- Reversing the burner tray from HIGH to LOW to control heat.
- When 3 burners are on HIGH it is extremely HOT (hot enough to fry an egg)
- Easy and practical use for chefs
- Heavy duty construction – built to last
- Easy to clean and maintain



# NEW DIAMOND ROUND CHAFERS

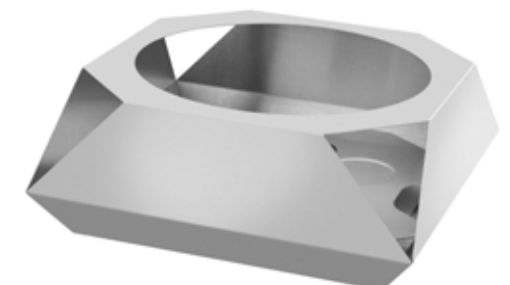
Diamond Round Chafers are a buffet's best friend. Ergonomic design allows for more serving space and easy replenishment. Peek through glass window allows guests to see what is inside without opening the lid. Transitions seamlessly between breakfast, lunch and dinner. Get the functionality of a traditional round chafer with a look that is anything, but traditional.



## Diamond Round Chafer with Soft Closing Lid

Stainless Steel  
19.1 x 19.1 x 10.7 in  
48.5 x 48.5 x 27.2 cm

**Item # SK049**



## Diamond Round Chafer

Stainless Steel  
19.1 x 19.1 x 7.5 in  
48.5 x 48.5 x 19.1 cm

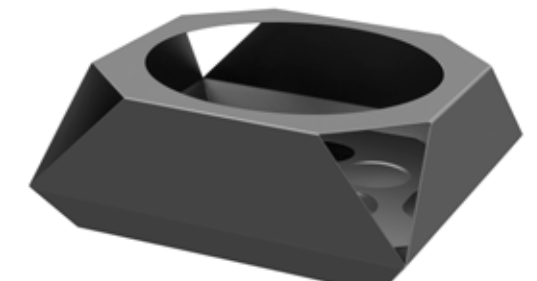
**Item # SM283**



## Diamond Round Chafer with Soft Closing Lid

Black Steel  
19.1 x 19.1 x 10.7 in  
48.5 x 48.5 x 27.2 cm

**Item # SK050**



## Diamond Round Chafer

Black Steel  
19.1 x 19.1 x 7.5 in  
48.5 x 48.5 x 19.1 cm

**Item # SM284**



**Diamond Multi-Chef™ Black Matte 7” Kit**

Includes Burner, Fuel Holder, and Grill

26 x 15.75 x 7.5 in

66 x 40 x 19 cm

**Item # SK047**



**Diamond Multi-Chef™ Black Matte 10” Kit**

Includes Burner, Fuel Holder, and Grill

28 x 16.6 x 10 in

71 x 42.2 x 25.4 cm

**Item # SK046**



**Diamond Multi-Chef™ Stainless Steel 7” Kit**

Includes Burner, Fuel Holder, and Grill

26 x 15.75 x 7.5 in

66 x 40 x 19 cm

**Item # SK045**



**Diamond Multi-Chef™ Stainless Steel 10” Kit**

Includes Burner, Fuel Holder, and Grill

28 x 16.6 x 10 in

71 x 42.2 x 25.4 cm

**Item # SK044**



**Diamond Multi-Chef™ Stainless Steel Frame 7”**

26 x 15.75 x 7.5 in

66 x 40 x 19 cm

**Item # SM267**



**Diamond Multi-Chef™ Stainless Steel Frame 10”**

28 x 16.6 x 10 in

71 x 42.2 x 25.4 cm

**Item # SM254**



**Diamond Multi-Chef™ Black Matte Frame 7”**

26 x 15.75 x 7.5 in

66 x 40 x 19 cm

**Item # SM274**



**Diamond Multi-Chef™ Black Matte Frame 10”**

28 x 16.6 x 10 in

71 x 42.2 x 25.4 cm

**Item # SM273**



**Soft Closing Chafing Pod**

Brushed Stainless Steel

22.8 x 17.3 x 7.1 in

58 x 44 x 18 cm

**Item # SM249**

